



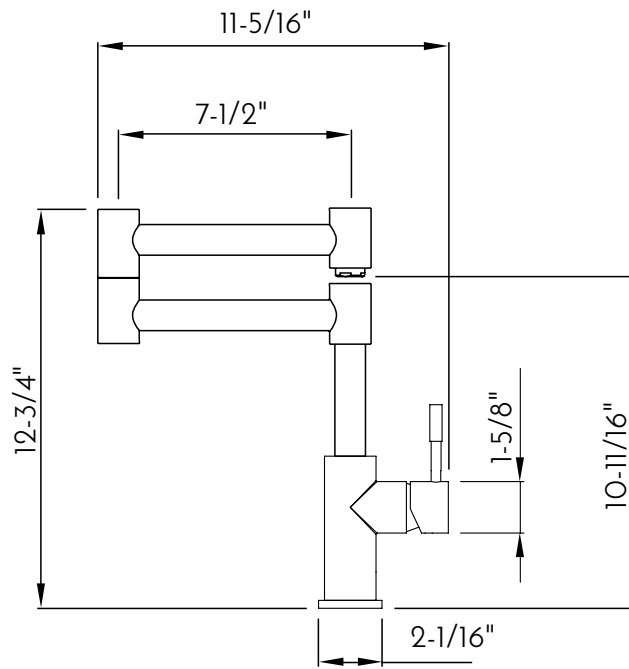
DAX-006-01



KITCHEN FAUCETS SERIES



www.daxib.com



FEATURES

- Fixed shower head
- Brushed stainless steel finish
- 304 stainless steel body casting
- Single sprayer
- Ceramic cartridge
- Flow rate 2.2 GPM
- Height 12-3/4"
- Installation hole 1-3/8"
- Water lines and mounting parts included

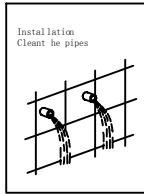




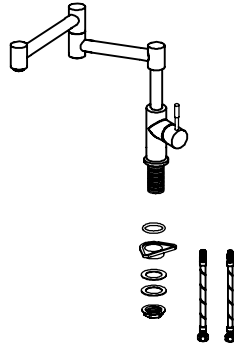
KITCHEN FAUCET DAX-006-01

MODEL	DAX-006-01
ANSI APPROVED	No
ASME APPROVED	No
WATERSENSE CERTIFIED	No
NSF APPROVED	PASSED
CONNECTION SIZE	M34
FAUCET HOLE SIZE	1-3/8"
FAUCETS HOLE	1 hole
FAUCET TYPE	Contemporary kitchen faucet
FLOW RATE (GPM)	2.2 GPM
HANDLE STYLE	Lever handle
NUMBER OF HANDLES	1
HOSE LENGTH :	AMERICAN 3/8 INLET HOSE 19-11/16"
INSTALLATION TYPE	Deck mounted
MATERIAL	Stainless steel 304 grade
FINISH	Brushed stainless steel
PULL OUT SPRAY	Not available
PRE-RINSE	No
SIDESPRAY	Side
SPOUT REACH	3" - 5"
SPOUT SWIVEL	360° Swivel
SPOUT TYPE	Standard spout
CARTRIDGE TYPE	Ceramic
MAX DECK THICKNESS	0 - 1-3/8"
INCLUDED COMPONENTS	Water lines and mounting parts

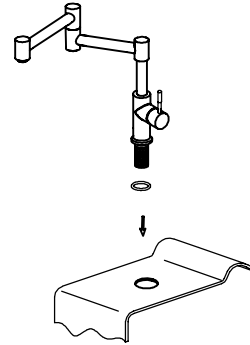




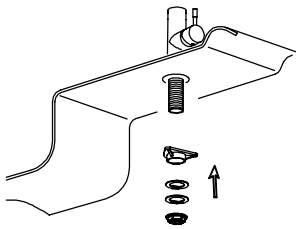
01



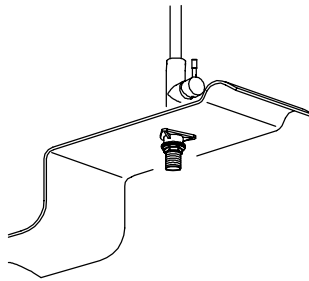
02



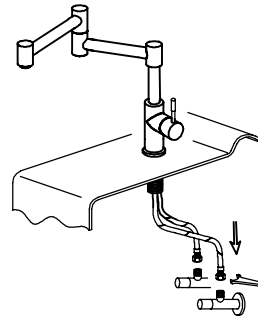
03



04



05



i

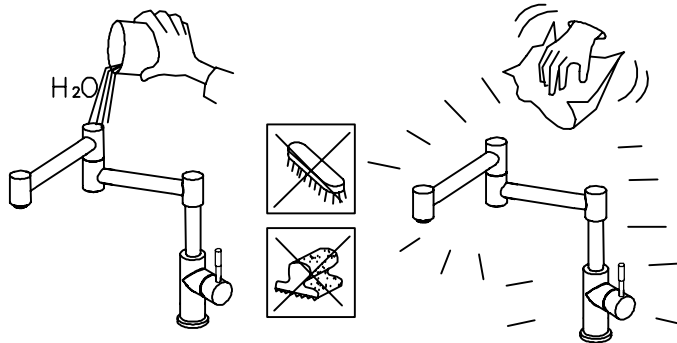
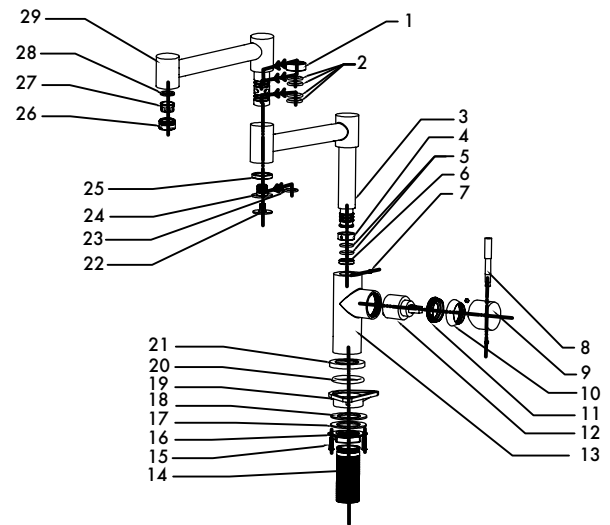




DIAGRAM NUMBER	DAX SKU	TITLE DESCRIPTION
1	0 112	Twisted faucet fixed nylon plastic ring
2		Gum * 24 * 18 O 3
3	0 109	Twists and turns
4	0 172	Plastic ring
5		O plastic 21.3 * 16 * 2.65
6	0 175	Plastic ring
7		M5 * 5 Hexagon set screws
8	0 174C	Handle bar
9	0 173	Handle
10	0 166	Decorated cover
11	0 165	Gland
12		Spool K35A
13	0 273	High body
14	0 170B	M34 tube
15		Phillips head stainless steel machine wire
16	0 018	Large nuts M34
17	0 013	Stainless steel punch flat pad
18	0 017	flat plastic base
19	0 545	Bottom fixed plastic seat
20		Gum * 37.5 * 48 O 5.25
21	0 169	Base
22	0 115	Hyperbolic faucet
23		O gum 16 20.8 * 2.4 *
24	0 114	Hyperbolic faucet
25	0 113	Twisted faucet fixed nylon plastic ring
26	00 24B	24 Tsui
27		Newpa 24 mesh mouth
28		Flat rubber * 2 21 * 15
29	0 211	Twists and turns



For parts or sale requirements please contact our customer service department:

 CS@daxib.com

 1 888 685 8236

